

# Going through Clearing?

## Have your details changed?

If you've already applied for student finance but have changed your course, or your university or college, you must let us know as soon as possible as this could affect the amount of student finance you can get.

It's easy to update your details, simply log into your student finance account at [www.gov.uk/studentfinance](http://www.gov.uk/studentfinance) and go to

Your Account



> Change your Application



> University/College and Course

## Haven't applied yet?

If you haven't applied for student finance yet, you need to apply now. The sooner you apply, the sooner we'll be able to process your application.

You might not get all your money in time for the start of your course but we'll make an initial assessment so you have some money as close to the start of your course as possible.

Apply online now at [www.gov.uk/studentfinance](http://www.gov.uk/studentfinance)

## Find out more

For regular updates like us on Facebook, follow us on Twitter and watch our films on YouTube.

 /SFEEngland

 /SF\_England

 /SFEFILM

sfe

student finance england  
the student finance experts

## Still got questions about student finance or Clearing?

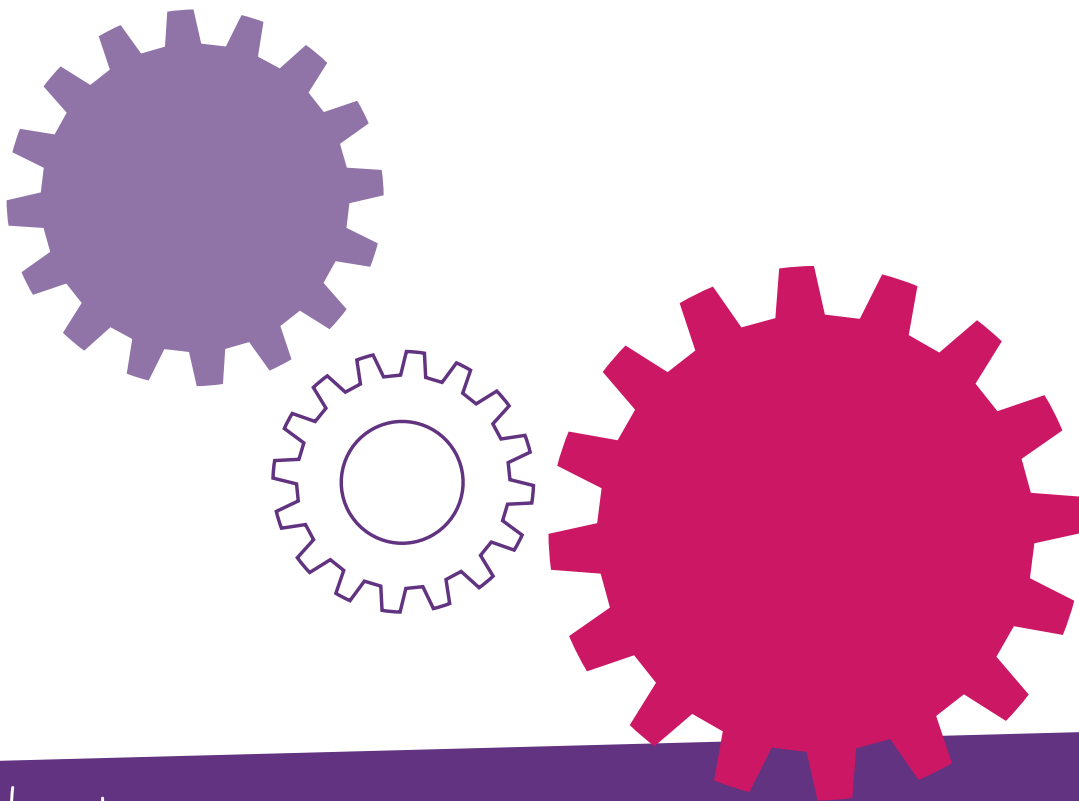
Our experts are available online **Monday-Friday 9am-5pm** and **Saturday 9am-4pm** to answer your questions:

- tweet us **@SF\_England**,
- post your question on **Facebook/SFEngland**, or
- visit our student finance zone at **www.thestudentroom.co.uk/studentfinance** and ask us in our forum

You don't need to wait until you've got your results if you've got a question!

You can also watch our 'Going through Clearing?' YouTube playlist at **www.youtube.com/SFEFILM**

And to find out how to apply and what you can get read our interactive quick start guides at **www.sfengland.slc.co.uk/quickstartguides**



### Find out more

For regular updates like us on Facebook, follow us on Twitter and watch our films on YouTube.

 /SFEngland

 /SF\_England

 /SFEFILM

**sfe**

student finance england  
the student finance experts