

**University of  
Northampton**

# **DISCOVERY DAY GUIDE**

# **UoN**







# WELCOME

**Thanks for registering for our discovery day.  
This guide is packed full of information so that  
you can make the most out of your visit.**

**We can't wait to see you.**


**Download our free UONprospectus app.  
Designed to give you the latest information first.**




---

 UniNorthants (#UON)

 UniversityofNorthampton

 UniNorthampton

 uninorthants

 uninorthants

 uninorthants



# NORTHAMPTON EMPLOYMENT PROMISE

We work with employers to understand what they're looking for and we're confident that if you follow one of our structured awards, as well as committing to your studies, you'll be in a competitive position when it comes to applying for graduate jobs.

We're so confident, that we promise to secure a paid 3-6 month internship for you, if you need it. Find out more about the Northampton Employment Promise [here](#), including how it works and who is eligible.

# CONTENTS

- 04 Our campus
- 05 How to find us
- 06 On arrival
- 07 Gold - teaching excellence
- 09 What can I do at a discovery day?
- 10 Our courses - subject information
- 13 Become a Changemaker
- 15 Hello from the Students' Union
- 17 FAQs
- 18 Other information
- 19 Campus map



# OUR CAMPUS

**Located in a prime town centre location on the banks of the River Nene, our new Waterside Campus is a £330m project that will take your breath away...**

**Come and take a look around at the discovery day!**

## **Your campus**

A few minutes' walk from the town centre, the campus is located on the banks of the River Nene in Northampton's Enterprise Zone, where global brands sit alongside a huge number of thriving small businesses.

If you choose to live on campus in your first year you'll be living in our on-site student village – which includes stunning five-storey flats and four-storey townhouses with landscaped courtyards.

On your doorstep is something really unique. A Grade II listed railway engine shed on the south side of the campus has been converted into the home of the Students' Union and its sports teams, societies and services. The building is a fusion of classic and modern design – and is a great place to relax with friends.

## **Where learning meets lifestyle**

It's a space to read, research, discuss group projects or just catch up with friends and enjoy a coffee. The campus blurs divides by bringing together resources, staff and spaces that would traditionally be separate. From the moment you walk through the entrance into the immense, light-filled foyer of the Learning Hub, you are going to know this isn't your standard university.

# OUR NEW HOME SINCE 2018





# HOW TO FIND US

The University of Northampton is committed to sustainability and protecting the environment. Wherever possible, please do use the most sustainable form of transport for your journey. Some options are below:

## Travelling by car

If you are travelling by car, please access our car parks via New South Bridge Road - the nearest postcode for your satnav is **NN4 8RR**.

## Accessible car parking spaces

Spaces are available for blue badge holders. If you require an accessible car parking space please email

**events@northampton.ac.uk**  
for further details.

## Travelling by train

Northampton Railway Station is one hour by train from both London Euston and Birmingham New Street. Look out for our student ambassadors at the train station, who will point you in the right direction to the campus.

## University of Northampton Park and Ride

A Park and Ride system runs from the west side of Northampton - the car park is a short distance from M1 junctions 15a and 16. The service is free of charge on our discovery days - it's a great way to try out one of the ways you can travel to uni if you do decide to study with us.

The address for the Park and Ride is:

Claret Car Park and Saints Car Park, Edgar Mobbs Way, Sixfields, Northampton, NN5 5JR.

The buses run every 30 minutes on Saturdays and it's approximately a 2.3 mile journey to the University.

## Travelling by bus or coach

National Express and other coach services operate from Victoria Street (please check with your operator to confirm) which is located directly beside the Upper Mounts car park in the town centre. Local buses operate from Northgate Bus Station, just off the Market Square in the town centre.

More information can be found via  
**northampton.ac.uk/new-students/  
travel-and-parking/bus-and-train-services**

## Travelling on foot

You can walk to Waterside Campus via our footbridge which connects with Becket's Park.

## Travelling by bike

Cycle storage is available on site. The closest to registration is next to the Creative Hub.

## Travelling by taxi

Please ask your taxi driver to drop you off at Waterside Campus, New South Bridge Road entrance.



# ON ARRIVAL

## On arrival

Registration will take place in the Creative Hub, just follow our on-site signage. If you do get lost or need any advice just look for one of our friendly team of student ambassadors who will be happy to point you in the right direction – they're in bright blue uniforms, so you can't miss them!

## Accessible events

We endeavour to make all our events completely accessible. However, if you have any specific needs or require additional facilities, please inform us on **01604 892568** or **events@northampton.ac.uk** so we can ensure your visit is as easy as possible.

## What to bring to the discovery day.

You will receive a card in the post the week before the discovery day confirming your registration. Please bring this with you as it will speed up checking in.

## Your discovery day guide

This online brochure is your comprehensive guide to the discovery day. If you have any further queries in advance of your visit, our Events Team will be happy to assist. You can email **events@northampton.ac.uk** or phone **0300 303 2772**.





# GOLD – TEACHING EXCELLENCE FRAMEWORK 2017

**We are very proud to have been awarded Gold – the highest possible mark – in the Government’s Teaching Excellence Framework (TEF).**

## What is the TEF?

The TEF is a league table where universities, colleges and private providers are judged on the quality of the education they provide. The TEF is run by the Government and is therefore ‘official’, unlike other league tables.

The Government looked at official data and what the University of Northampton provides to its students, and found the following to be “outstanding”:

- levels of employment or further study for our graduates
- assessment and feedback
- a personalised student experience
- academic support
- our approach to involving students in research, scholarship and professional practice – with strengths in community based research and scholarship and sector-leading work on social enterprise.

If you study with us you will know that our teaching and outcomes for students are officially the highest quality found in the UK and we offer very high levels of support, putting you first.

The full TEF results and the evidence used in the assessment can be found at [hefce.ac.uk](https://www.hefce.ac.uk)

## What does TEF Gold mean for students at Northampton?

- our teaching and outcomes for students are officially the highest quality found in the UK
- we were given gold because we offer very high levels of support to our students and put you first.

Only 42 other universities have achieved gold, so you will be choosing one of the best teaching universities in the UK.

You can view the full TEF tables on the Higher Education Funding Council for England website [here](#)



**Teaching  
Excellence  
Framework**

# SAMUEL OGUNLEYE

## Multimedia Journalism BA (Hons).

Giving our students opportunities they wouldn't otherwise have is important to us. We helped football fan Samuel secure work experience as a match-day reporter, which led to him being selected by the FA to draw teams for the third round of the FA Cup.

---

**“ My lecturers helped me to get work outside of my studies. Without these chances, I wouldn't have done a lot of the work I've been involved in. ”**

---

**Learn more about Samuel by downloading our free UONprospectus app.**





# WHAT CAN I DO AT THE DISCOVERY DAY?

We appreciate that choosing a university is a very important decision to make. So our discovery days are designed exclusively for applicants to visit us and experience our courses.

The day is a chance for you to get to know us better – we want you to feel as informed as possible.

## Introductory talks

### Welcome to UON

**Times: 9.30am - 9.50am, 11.40am - 12.00pm.**

Find out more about us and our new Waterside Campus, which opened in September 2018.

### Parents and Guardians talk

**Time: 10.30am - 11.30am.**

This talk includes all the information required to help support an applicant. It's specifically designed for parents and guardians and you can attend this whilst applicants are in their subject-specific session.

### Torn between two courses? Find out about Joint Honours.

**Time: 9.55am - 10.10am.**

## Courses

### Subject information

See pages **10-12** for details of subject sessions and drop-ins available for each of our courses. **Please check the dates carefully, as not all courses will be offering the same sessions on all of our discovery days.**

For further information on course content, visit our course pages at [northampton.ac.uk/courses](http://northampton.ac.uk/courses)

## Explore

### Take a look around our campus

Our campus will be open between 9am and 2.30pm. We'll provide you with a map on arrival so you can look around. Staff will be on hand around the campus to answer your queries and questions.

### Tours

Tours lead by our student ambassadors will take place every 15 minutes from 9am - 2.15pm. Tours take approximately 30 minutes.

### Accommodation

#### Available for viewing 9am - 2.30pm.

We have a range of ways you can get a feel for our student accommodation.

**Campus accommodation:** Our newly completed Halls of Residences and Townhouses are available for you to view.

**St John's Hall of Residence:** Based in the town centre, it's a 8-10 minute walk from campus.

**Scholars Green Student Village:** Located offsite, you can visit our Scholars Green Student Village on our dedicated bus service. Ask the Welcome Team for more information.



### Changemaker and Employability

#### Drop in between 9am - 2.30pm.

Visit the Changemaker Team to find out more about Changemaker and our award winning Careers and Employability service.

### Student Services

#### Drop in between 9am - 2.30pm.

If you have any questions on student accommodation, finance or additional support, drop in throughout the day to find out more.

### Catering

Grab some refreshments from one of our on-site cafés.

### Students' Union

#### Drop-in between 9am - 2.30pm.

Find out about the support you can access and the societies and sports you can get involved with.

# 8 February 2020

For all of our courses, we'll be offering subject sessions or a drop-in, or the opportunity to attend both a subject session and a drop-in.

## Subject sessions, 10.15-11.45am

(sessions last for approximately 90 minutes). You'll be introduced to the course content, exploring the topics covered and how you'll be assessed, as well as gaining an insight into the way modules are delivered. We'll tailor the session to suit the group size on the day, so you may have a small group discussion with your tutor, or a one-to-one chat, rather than a fully interactive subject session.

**Drop-ins, 12.30-2pm:** available for those quick fire questions you may have.

## The following subjects will be offering a subject session AND then a drop-in session:

- Accounting, Banking and Finance
- Adult Nursing
- Advertising & Digital Marketing
- Applied Social Care (Joint Honours only)
- Business
- Childhood and Youth
- Children & Young People's Nursing
- Creative Film, Television and Digital Media Production
- Criminal and Corporate Investigation
- Criminology
- Dental Nursing FdSc
- Digital Business
- Early Childhood Studies/ Early Childhood Studies (Top-Up)
- Early Years Foundation Degree
- Economics
- Education Studies
- English
- Entrepreneurship & Innovation
- Events Management
- Fashion Marketing & Promotion
- Film and Screen Studies (Joint Honours only)
- Geography (Human and Physical)
- Health Studies (Joint Honours only)

- Health & Social Care FdSc/Health and Social Care (Top-Up)
- History
- Human Resource Management
- International Business
- International Development
- International Relations and Politics
- International Tourism Management
- Law
- Leadership and Management
- Marketing Management
- Midwifery
- Multimedia Journalism
- Popular Music
- Primary Education (5-11) with Qualified Teacher Status
- Professional Policing/Applied Criminal Justice Studies
- Psychology (all pathways)
- Social Care and Community Practice
- Social Work
- Sociology
- Special Educational Needs and Inclusion
- Sports Studies (Joint Honours only)

## The following subjects will be offering drop-in sessions ONLY, at 10.15-11.45am and 12.30-2pm:

- Early Years Teacher Status (postgraduate)
- Learning and Teaching/Foundation Degree in Learning and Teaching

## The following subjects will be offering a subject session ONLY:

- Architectural Technology
- Business Computing/Computing (all pathways)
- Engineering (all pathways)
- Environmental Science
- Fashion (all pathways)
- Fine Art/Fine Art Painting & Drawing
- Games Art/Games Design
- Games Programming
- Graphic Communication
- Health Sciences
- Human Bioscience, Biology and Biomedical Science
- Illustration
- Interior Architecture & Spatial Design
- Leather Technology
- Multimedia Sports Journalism
- Photography
- Product Design
- Sports (all pathways)



# 7 March 2020

**For all of our courses, we'll be offering subject sessions or a drop-in, or the opportunity to attend both a subject session and a drop-in.**

## **Subject sessions, 10.15-11.45am**

(sessions last for approximately 90 minutes). You'll be introduced to the course content, exploring the topics covered and how you'll be assessed, as well as gaining an insight into the way modules are delivered. We'll tailor the session to suit the group size on the day, so you may have a small group discussion with your tutor, or a one-to-one chat, rather than a fully interactive subject session.

**Drop-ins, 12.30-2pm:** available for those quick fire questions you may have.

**The following subjects will be offering a subject session AND then a drop-in session:**

- Accounting, Banking and Finance
- Adult Nursing
- Advertising & Digital Marketing
- Applied Social Care (Joint Honours only)
- Business
- Childhood and Youth
- Children & Young People's Nursing
- Creative Film, Television and Digital Media Production
- Criminal and Corporate Investigation
- Criminology
- Dental Nursing FdSc
- Digital Business
- Early Childhood Studies/Early Childhood Studies (Top-Up)
- Early Years Foundation Degree
- Economics
- Education Studies
- English
- Entrepreneurship & Innovation
- Events Management
- Fashion Marketing & Promotion
- Film and Screen Studies (Joint Honours only)
- Geography (Human and Physical)
- Health Studies (Joint Honours only)
- Health & Social Care FdSc/Health and Social Care (Top-Up)
- History

- Human Resource Management
- International Business
- International Development
- International Relations and Politics
- International Tourism Management
- Law
- Leadership and Management
- Marketing Management
- Midwifery
- Multimedia Journalism
- Occupational Therapy
- Popular Music
- Primary Education (5-11) with Qualified Teacher Status
- Professional Policing/Applied Criminal Justice Studies
- Psychology (all pathways)
- Social Care and Community Practice
- Social Work
- Sociology
- Special Educational Needs and Inclusion
- Sports Studies (Joint Honours only)

**The following subject will be offering a drop-in session ONLY, at 10.15-11.45am and 12.30-2pm:**

- Learning and Teaching/Foundation Degree in Learning and Teaching

**The following subjects will be offering a subject session ONLY:**

- Architectural Technology
- Business Computing/Computing (all pathways)
- Engineering (all pathways)
- Environmental Science
- Fashion (all pathways)
- Fine Art/Fine Art Painting & Drawing
- Games Art/Games Design
- Games Programming
- Graphic Communication
- Health Sciences
- Human Bioscience, Biology and Biomedical Science
- Illustration
- Interior Architecture & Spatial Design
- Leather Technology
- Multimedia Sports Journalism
- Photography
- Product Design
- Sports (all pathways)

# 4 April 2020

**For the majority of courses we will be offering a drop in from 10.15am-2pm at this discovery day.**

**The following subjects will be offering a drop-in session ONLY:**

- Accounting, Banking and Finance
- Advertising & Digital Marketing
- Architectural Technology
- Applied Social Care (Joint Honours only)
- Business
- Business Computing/Computing (all pathways)
- Childhood and Youth
- Creative Film, Television and Digital Media Production
- Criminal and Corporate Investigation
- Criminology
- Dental Nursing FdSc
- Digital Business
- Early Childhood Studies/Early Childhood Studies (Top-Up)
- Early Years Foundation Degree
- Economics
- Education Studies
- English
- Engineering (all pathways)
- Entrepreneurship & Innovation
- Events Management
- Environmental Science
- Fashion (all pathways)
- Fashion Marketing & Promotion
- Film and Screen Studies (Joint Honours only)
- Fine Art/Fine Art Painting and Drawing
- Games Art/Games Design

- Games Programming
- Geography (Human and Physical)
- Graphic Communication
- Health & Social Care FdSc/Health and Social Care (Top-Up)
- Health Studies (Joint Honours only)/Health Sciences
- History
- Human Bioscience, Biology and Biomedical Science
- Human Resource Management
- Illustration
- Interior Architecture & Spatial Design
- International Business
- International Development
- International Relations and Politics
- International Tourism Management
- Law
- Leadership and Management
- Learning and Teaching/Foundation Degree in Learning and Teaching
- Learning Disability Nursing
- Leather Technology
- Marketing Management
- Multimedia Journalism
- Multimedia Sports Journalism
- Photography
- Popular Music
- Product Design
- Professional Policing/Applied Criminal Justice Studies
- Psychology (all pathways)
- Social Care and Community Practice
- Social Work
- Special Educational Needs and Inclusion
- Sports (all pathways)

## **Subject sessions, 10.15-11.45am**

(sessions last for approximately 90 minutes). You'll be introduced to the course content, exploring the topics covered and how you'll be assessed, as well as gaining an insight into the way modules are delivered. We'll tailor the session to suit the group size on the day, so you may have a small group discussion with your tutor, or a one-to-one chat, rather than a fully interactive subject session.

## **The following subjects will be offering a subject session between 10.15 and 11.45am ONLY:**

- Adult Nursing
- Children & Young People's Nursing
- **Mental Health Nursing**  
You'll meet our current students and academic staff, as well as your future classmates. During the session, you'll have a group discussion about studying our Mental Health Nursing programme and what life is like on a placement.
- Occupational Therapy
- Paramedic Science
- **Podiatry**  
This session will be held at our Podiatry Clinic, just a short walk from Waterside Campus and conveniently located next to Northampton General Hospital. The session will include ultrasound scanner imaging, with an opportunity to visit anatomy of the lower limb and apply it to diagnostic imaging. You'll also get the chance to use advanced vascular assessment equipment and become familiar with some of the other facilities on offer at our clinical unit. You'll be taken to the Podiatry Clinic after you've registered at Waterside Campus in the morning.
- Sociology





# BECOME A CHANGEMAKER

**Changemaker is a term you'll hear used a lot at the University of Northampton, and there are great reasons why.**

In 2013 we were the first university in the UK to be given the title of "Changemaker Campus" by Ashoka U – a community of leaders and institutions who work to find solutions to society's problems through Higher Education and beyond.

We are part of an exclusive network of only 45 colleges and universities from around the world that are recognised as Changemaker Campuses. This means we are among the global leaders in social innovation with the vision of what education can be.

## **Do you have an idea that could make a difference?**

We want to help you to be a leader of the future, and so we offer a Changemaker programme that will allow you to develop that idea and address a problem in the world through a new social venture. Whether that's a business in its own right or a different way of working that changes the way people view that problem.

As a graduate of the programme, you will be internationally recognised by Ashoka U as a Changemaker who has what it takes to make an impact on society.



**DEVELOP THE SKILLS REQUIRED TO STAND OUT IN THE EMPLOYMENT MARKET.**



# GRACE WATTS

**Product Design  
BSc (Hons).**

**With the world's ocean and marine life under threat, Grace wanted to apply her learning in a way that could make a difference. For her final major project, she created the Plastigully - a unique invention that sits in street storm drains and collects any litter that falls into them without affecting water flow. The invention gained national media attention and the backing of Margaret Bates, the University's Professor of Sustainable Wastes Management.**

**Learn more about Grace  
by downloading our free  
UONprospectus app.**





# HELLO FROM THE STUDENTS' UNION

Seven things you will learn about the Students' Union this discovery day.



## 1

From the moment you enrol at the University of Northampton, you automatically become a member of the Students' Union, an independent organisation and diverse community of 13,000 members dedicated to ensuring you have the best possible time at university. Even better – membership is FREE!

**ONE OF ONLY TWO  
STUDENTS' UNIONS TO  
OFFER FREE UNLIMITED  
MEMBERSHIP TO  
SPORTS AND SOCIETIES**

## 2

Our Students' Union currently has 37 different sports clubs and is one of only three students' unions in England\* to offer free unlimited membership to everyone, across any of these clubs.

Whether you're interested in joining Archery, Cheerleading, Trampolining, Rugby or any of our outstanding sports teams, you'll have access to professional coaching, with no match day costs to pay, no transport costs to cover and no membership fee!

Over the course of your three years at Northampton this could stand to save you hundreds of pounds compared to other Students' Unions in the region.

\*At time of publication

## 3

Why not try something new? We have a range of over 40 diverse societies, from academic groups set up to support your learning such as Law or Psychology Societies, through to fun and recreational societies such as Airsoft, and did we mention there's a Disney Society?

If you can't find a group you'd like to join, you can start your own, which is exactly what the Salsa Society did - you can find them dancing across campus.

They are all free to join – so you can join as many as you want and try something new!





## 4

### **We have the best entertainments in town**

In January 2018, after a £2m refurbishment, the Students' Union opened its first town centre venue - The Platform - a premium evening destination that caters to our student members through exclusive student nights as well as to the general public; offering brilliant entertainment at affordable prices. Spread across three distinct spaces, The Platform offers a multitude of music styles with luxe, comfortable furnishings offset against contemporary fixtures, alongside premium spirits and beverages. With Milk It Mondays and LOCO every Wednesday, in addition to our alternative dance night, Decibel, on a Friday, The Platform really has something for everyone!

## 5

### **We help you to stretch your student loan**

The Students' Union is an independent charity so we reinvest all of the money made in our bars, venues and retail outlets into providing our student activities. We want to make sure your money goes further so as well as free sports and societies we aim to provide you with services and activities at student friendly prices. If you're looking for a part-time job to supplement your income alongside your studies, why not apply for one of the many jobs at the Students' Union? Last year our student staff each took home an average of £3,154 in wages across the year.

## 6

### **Take part and develop your skills**

The Students' Union is led by over 1,000 student volunteers working in a range of roles, from managing Sports Clubs and Societies to representing classmates as Course Reps or supporting community work. The Students' Union is here to support your ambitions and help you and your groups to develop. Throughout the year we recognise our volunteers' achievements with prizes ranging from chocolate to vouchers and we host spectacular award ceremonies across Northampton to celebrate your hard work.

## 7

### **We're here to help**

The Students' Union is always here for you. We offer independent, free, academic advice for those times when things don't quite go to plan and academic representation through our Elected Officers when you need your voice to be heard. Whatever your passion or interest, time commitment or background it couldn't be easier to get involved with the Students' Union and make the most out of your university experience.

Find out more by visiting the Students' Union, speak with our Sabbatical Officers or visit:

**[northamptonunion.com](http://northamptonunion.com)**



# FAQs

## Where should I park?

If you are travelling by car, please access our car parks via New South Bridge Road - the nearest postcode for your satnav is **NN4 8RR**.

## Do I need to come for the whole day?

The format of the discovery day is very informal and allows you to plan your day as you wish.

### Key activities:

- Subject information delivered by your future tutors
- Tours of Waterside Campus
- Finding out about student accommodation
- Drop-ins with our Student Services team and Employability team.

## Can we see all types of campus-based student accommodation at a discovery day?

We have a range of ways you can get a feel for our student accommodation.

**Campus accommodation:** Our newly completed Halls of Residences and Townhouses are available for you to view.

**St John's Hall of Residence:** Based in the town centre it's a 8-10 minute walk from campus.

**Scholars Green Student Village:** Located offsite, you can visit our Scholars Green Student Village on our dedicated bus service. Ask the Welcome Team for more information.

## Can I bring family and friends?\*

Of course! Making your university choices sometimes needs a second opinion.

\*Please note your guests will not receive a registration email or card, these are only sent to the lead booker.

## What happens if my registration card doesn't arrive in time?

Don't worry, the personalised registration card is sent to try and save you time at registration. You can still attend if you don't have this with you on the day.

## Do I need to let you know if I need to cancel?

Yes please! Changes to your booking details such as cancelling your registration or changing to an alternative day, can be made by contacting the Events Team on **01604 892568** or **events@northampton.ac.uk**

## Where can I stay overnight?

There's Sunley Hotel, our on-campus hotel, as well as a wide selection of hotels in the town centre, all within walking distance.

## What happens if I can't attend a discovery day?

If you're unable to attend a discovery there are other opportunities to visit the University.

We run campus tours every Wednesday throughout the year and a place can be booked online at

**[northampton.ac.uk/about-us/campus-tours/](http://northampton.ac.uk/about-us/campus-tours/)**

Our campus tours don't include a meeting with any course tutors as standard, however if you're interested in this, please contact the events team on **01604 892568** or **events@northampton.ac.uk**



# OTHER INFORMATION

## General assistance

If you require any assistance on the day, please go to the registration desk and speak to a member of the Welcome Team who will be happy to help. There are maps and signposts on campus to help you find your way, but if you need guidance please ask our Student Ambassadors (wearing blue) who are available to help.

## Lost property

For lost property, please go to the registration desk and speak to a member of the Welcome Team who will be able to assist you.

## First aid and fire safety

In the event of a fire please evacuate the building you are in immediately and follow signs to the fire assembly point. Please remain here until you are advised by a member of staff that it is safe to re-enter the building.

If first aid assistance is required, please contact a member of staff immediately. You can also call our Security Team on **01604 89(2777)**.

## Multi-Faith Centre

Visitors are invited to drop in to view the facilities or use the Prayer Room in our Multi-Faith Centre throughout the day. Full ritual washing facilities are available for our Muslim users. The meeting room is also available for reflection and recharging your energies in the middle of a busy day. The Centre is open 24/7, with the kitchen and Prayer Room open from 6am-10pm. A member of the Multi-Faith Centre team is usually available on campus.

## Image capture policy

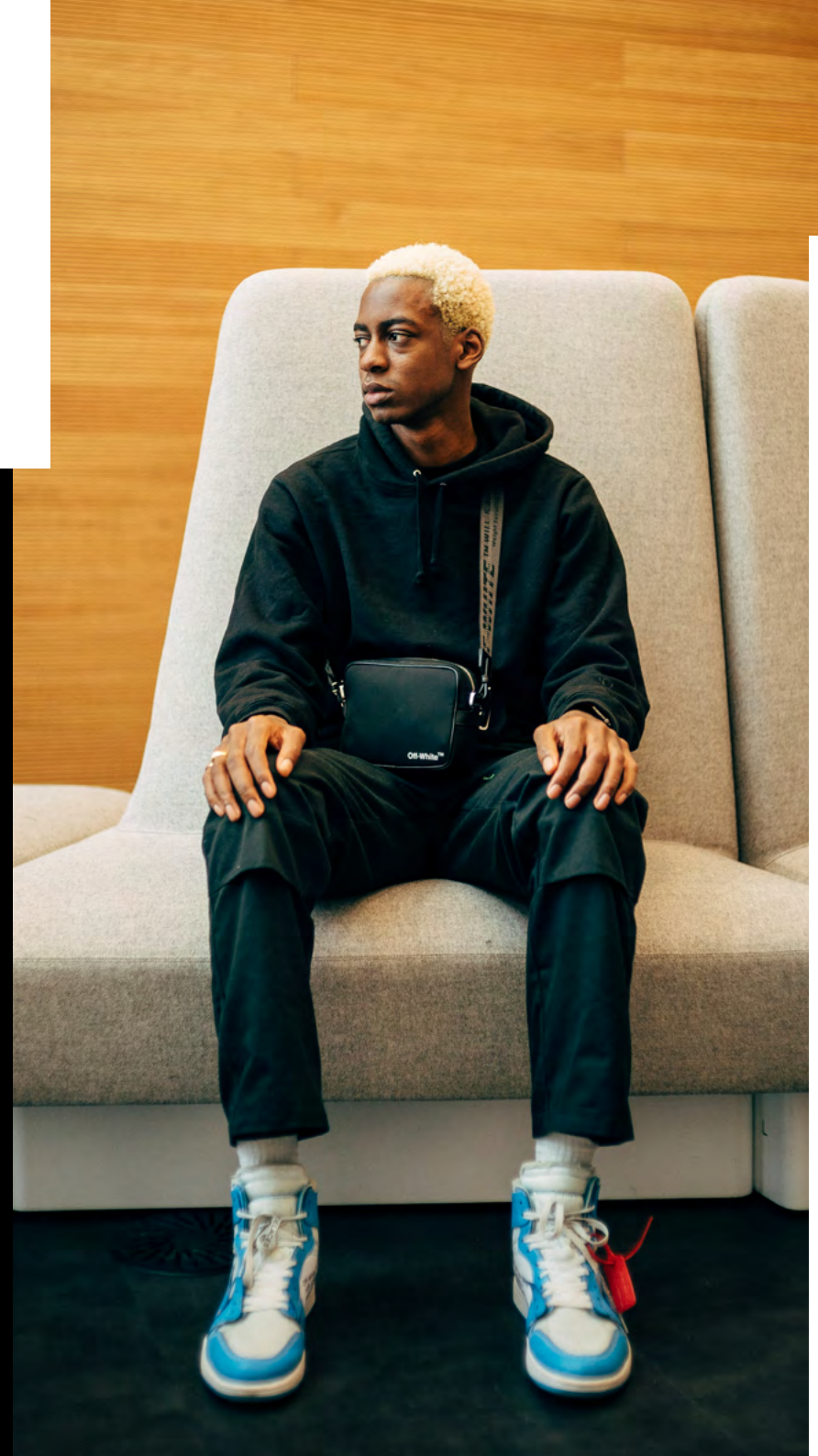
Please note, certain events and activities on the day will be photographed, filmed or otherwise captured in image form. Images may be used for marketing purposes across a range of channels, including social media. If you would prefer not to be included in photography or filming, please speak to the Welcome Team who will issue you with a lanyard which will identify you to our photography and filming teams.

Any queries about our Image Capture Policy should be raised with the Events Team in the first instance: **01604 8925682** or **events@northampton.ac.uk**.

## Disclaimer

Please note programme and venue details may be subject to change without notice

# OUR STUDENT AMBASSADORS ARE HERE TO HELP





# CAMPUS MAP

## CAMPUS KEY

- ❶ Senate
- ❷ Learning Hub
- ❸ Creative Hub
- ❹ Accommodation
- ❺ Sports Zone
- ❻ Engine Shed

University of  
Northampton

UoN

