

Psychology and Counselling

BSc (Hons)

This course is one of only a few such courses nationally, designed specifically for students who are interested in pursuing a career in counselling or counselling psychology, whilst also being accredited by the British Psychological Society (BPS).

Course content

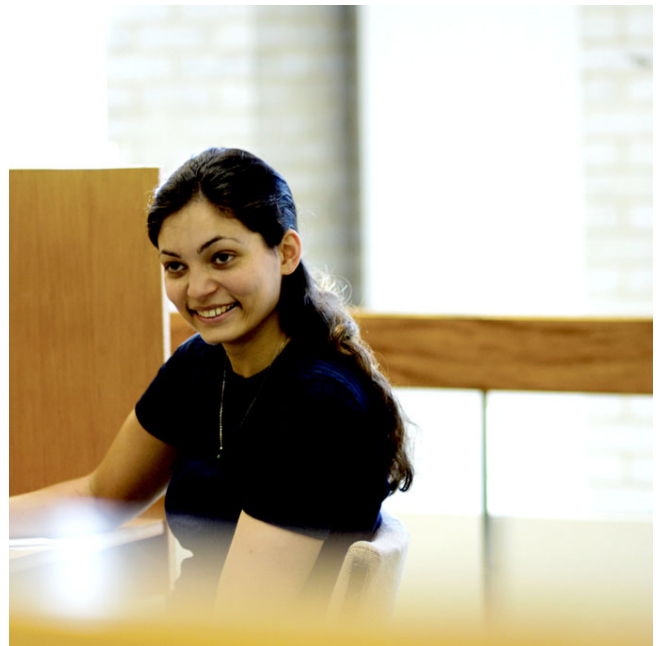
This course will provide students with an opportunity to develop understanding of the key theories and concepts in psychology and counselling. They will also learn basic counselling skills and gain an understanding of the professional context of counselling work. The applied nature of counselling psychology will be stressed throughout the programme. In addition to a focus on counselling concepts, issues and skills, the course will enable students to analyse and understand human behaviour, thought and emotions, from many different psychological perspectives.

The programme is accredited by the British Psychological Society as conferring eligibility for the Graduate Basis for Chartered membership, provided the minimum standard of second class honours is achieved. This is the first step towards becoming a Chartered Psychologist.

Full-time students take 120 credits per stage for three stages. Some modules are mandatory whilst others are selected from a range of options. In stage one important core ideas, evidence and methods are introduced. This includes the module Introduction to Counselling, which includes key concepts in counselling and an introduction to listening skills. The basic knowledge is built upon in stages two and three to foster both personal development and a cutting edge understanding of topics.

Stage one

In stage one, the core Counselling module is Introduction to Counselling. This includes key concepts in counselling and an introduction to listening skills. Students are given an excellent grounding in counselling and psychology that is built upon in the rest of the course.



Course level

Undergraduate

Modes of study

Part time, Full time

UCAS or UKPASS details

UCAS code: BC98

UCAS description: BSc/PC

School

School of Social Sciences

Location

Park Campus

Course contact

study@northampton.ac.uk

Avenue Campus

St George's Avenue
Northampton
NN2 6JD

Park Campus

Boughton Green Road
Northampton
NN2 7AL

Every effort has been made to ensure that all of the information contained in this fact sheet is correct at the time of distribution. Please note that The University of Northampton accepts no liability for the accuracy of statements in this and other marketing publications.

Stage two

During stage two, students undertake modules in counselling, professional issues and skills, along with other modules. Students also have the option of either a module on the psychology of well-being or a work-based placement related to counselling psychology.

Stage three

In stage three, students will undertake modules in counselling psychology theory and counselling skills. They also undertake an empirical dissertation in counselling psychology, representing a third of the final stage of work, under the guidance of a lecturer.

Special course features

- As part of the course, students will have the opportunity to undertake a work-based placement
- Students have access to excellent facilities and resources for research
- The University of Northampton has internationally and nationally recognised researchers in several topics including parapsychology and qualitative psychology

Typical modules

- Introduction to Counselling
- Counselling: Professional Issues and Skills
- The Developing Adult and Child
- Transpersonal Psychology
- Qualitative Psychology
- The Psychology of Mental Health
- The Psychology of Health

Types of assessment

A variety of assessment strategies are used at each level to ascertain your level of competence in a range of academic and transferable skills. These strategies

include essays, recorded role play exercises, reflective writing assignments, practical reports, multiple-choice tests, oral presentations, time-constrained essays, seen and unseen examinations, critical reviews and group project work.

Teaching methods include lectures, seminars, tutorials, experiential / skills workshops, practical / laboratory workshops, computer assisted learning, independent and group work. Discussion and student participation is encouraged. Practical work will represent an important component of your psychology course in each of the three years of study.

Entry requirements

In addition to the standard entry requirements, applicants are normally expected to hold GCSE Mathematics at grade C or above, or an approved equivalent. Typical offers are 300-320 UCAS tariff points.

Career opportunities

It is important to note that this is primarily an academic course rather than a professional training course, and that students who complete it will not be qualified as counsellors or counselling psychologists. However, on successful completion of the course, with a 2:2 or above, students should have the knowledge, skills and experience to enable them to pursue professional training in counselling or counselling psychology at postgraduate level.

This course not only prepares graduates for training in counselling / counselling psychology, but in other areas too. After further qualification, you can also obtain 'chartered' status as a clinical, educational, occupational, health or forensic psychologist. Also, academic psychologists conduct research and teach in higher education. Northampton graduates have followed each of these careers. It is widely acknowledged by employers that psychology degrees provide an excellent grounding for a diverse range of non-psychological careers. Moreover, the listening and communication skills developed on this degree course will be highly valuable in a range of health and social care professions. Our graduates are employed in education, the health service, the police force, human resources management, marketing, the civil service, broadcasting, social work and many other professions.

Avenue Campus
St George's Avenue
Northampton
NN2 6JD

Park Campus
Boughton Green Road
Northampton
NN2 7AL

Every effort has been made to ensure that all of the information contained in this fact sheet is correct at the time of distribution. Please note that The University of Northampton accepts no liability for the accuracy of statements in this and other marketing publications.